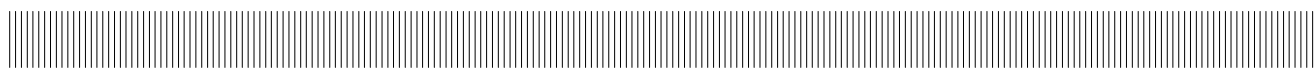


	EQUIPAGGIAMENTI TECNICI LAVAGGIO	GIUNTO GIREVOLE INOX S.S.T. SWIVEL MRI	① GB	5
			22/10/10	

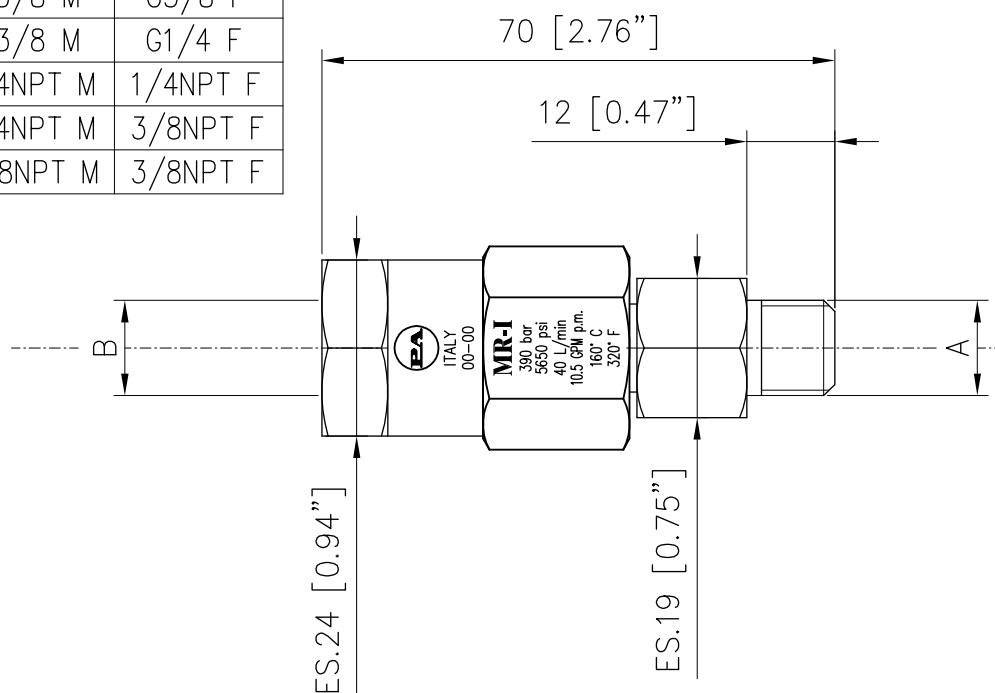


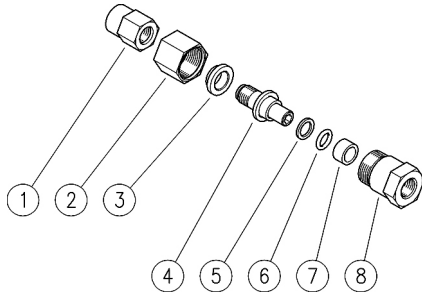
SPECIFICHE TECNICHE SPECIFICATIONS

- PRESSIONE NOMINALE <i>RATED PRESSURE</i>	350 bar – 35 MPa (5075 psi)
- PRESSIONE CONSENTITA <i>PERMISSIBLE PRESSURE</i>	390 bar – 39 MPa (5650 psi)
- PORTATA MASSIMA <i>MAX FLOW RATE</i>	40 l/min (10.5 USG p.m.)
- TEMPERATURA MASSIMA DI LAVORO (UTILIZZO CONTINUO) <i>MAX WORKING TEMPERATURE (CONTINUOUS USE)</i>	90° C (194 °F)
- TEMPERATURA MASSIMA AMMESSA (SOLO PER BREVI PERIODI) <i>MAX PERMISSIBLE TEMPERATURE (FOR SHORT PERIODS ONLY)</i>	160° C (320 °F)
- NUMERO DI GIRI MAX. <i>MAX RPM</i>	30
- COPPIA ALLA PRESSIONE NOMINALE <i>TORQUE AT RATED PRESSURE</i>	~2.9 Nm (25.6 Lbs.in)
- MATERIALE <i>MATERIAL</i>	ACCIAIO INOX STAINLESS STEEL
- GUARNIZIONI <i>SEALS</i>	OR IN FKM (VITON) O-RING SEALS IN FKM (VITON)

MISURE D'INGOMBRO OVERALL DIMENSIONS

CODICE <i>CODE</i>	A	B
26.1060.00	G1/4 M	G1/4 F
26.1061.00	G3/8 M	G3/8 F
26.1062.00	G3/8 M	G1/4 F
26.1060.50	1/4NPT M	1/4NPT F
26.1062.50	1/4NPT M	3/8NPT F
26.1061.50	3/8NPT M	3/8NPT F



26.1060.00 MR-I Giunto gir. inox G1/4 MF**26.1060.50 MR-I Giunto gir. inox 1/4 MF Npt****26.1061.00 MR-I Giunto gir. inox G3/8 MF****26.1061.50 MR-I Giunto gir. inox 3/8 MF Npt**

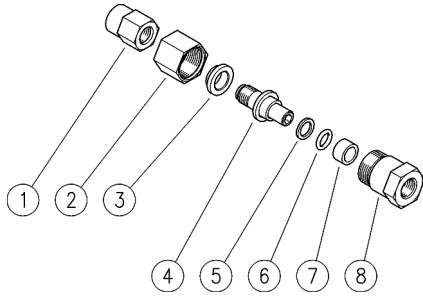
Pos.	Codice	Descrizione	Q.tà	K1	K2	K3	K4	
1	26.1043.51	Attacco post. M12F-G1/4M inox (1)	1					10
1	26.1066.51	Attacco post. M12x1,25F-1/4M Npt inox	1					10
1	26.1101.51	Att. post. M12 F-G3/8M svas. in. (2)	1					5
1	26.1068.51	Attacco post. M12F-3/8M Npt inox (3)	1					10
2	26.1042.51	Ghiera M22x1 inox	1					5
3	26.1045.84	Boccola 12x20x6 mm Plast.	1	•	•			5
4	26.1041.51	Perno M12x1,25 inox	1					5
5	10.4010.01	An. anties. a. 10,2x13,9x1,2 mm	1	•	•			50
6	10.3109.95	An.OR 2,4x9,3 mm Vi 70	1	•	•			25
7	26.1046.84	Boccola 10x14x7 mm Plast.	1	•	•			5
8	26.1044.51	Attacco ant. M22x1M-G1/4F inox (1)	1					1
8	26.1065.51	Attacco ant. M22x1M-1/4F Npt inox (4)	1					10
8	26.1051.51	Attacco ant. M22x1M-G3/8F inox (2)	1					10
8	26.1067.51	Attacco ant. M22x1M-3/8F Npt inox	1					10

Kit	Codice	Descrizione	
K1	26.1053.24	Kit ric. MR 4x1pz.	1
K2	26.1048.24	Kit ric. MR 4x10pz.	1

(1) 26.1060.00 (2) 26.1061.00 (3) 26.1061.50 (4) 26.1060.50


26.1060.00 MR-I Swivel, sst 1/4 MF Bsp

26.1060.50 MR-I Swivel, sst 1/4 MF Npt



26.1061.00 MR-I Swivel, sst 3/8 MF Bsp

26.1061.50 MR-I Swivel, sst 3/8 MF Npt

Pos.	P/N	Description	Q.ty	K1	K2	K3	K4	
1	26.1043.51	Coupling, M12F-1/4M Bsp Sst. (1)	1					10
1	26.1066.51	Back coupling, M12x1,25F-1/4M Npt Sst.	1					10
1	26.1101.51	Back cpl.,M12 F-3/8M Bsp c/sunk sst (2)	1					5
1	26.1068.51	Back coupling, M12F-3/8M Npt Sst. (3)	1					10
2	26.1042.51	Ring nut, M22x1 Sst.	1					5
3	26.1045.84	Bushing, 12x20x6 mm Plast.	1	•	•			5
4	26.1041.51	Pin, M12x1,25 Sst.	1					5
5	10.4010.01	Back-up ring,10,2x13,9x1,2mm	1	•	•			50
6	10.3109.95	O-ring, 2,4x9,3 mm Vi 70	1	•	•			25
7	26.1046.84	Bushing, 10x14x7 mm Plast.	1	•	•			5
8	26.1044.51	Front coupling, M22x1M-1/4F Bsp Sst. (1)	1					1
8	26.1065.51	Front coupling, M22x1M-1/4F Npt Sst. (4)	1					10
8	26.1051.51	Front coupling, M22x1M-3/8F Bsp Sst. (2)	1					10
8	26.1067.51	Front coupling, M22x1M-3/8F Npt Sst.	1					10

Kit	P/N	Description	
K1	26.1053.24	Spares kit -MR, 4x1pcs.	1
K2	26.1048.24	Spares kit -MR, 4x10pcs.	1

(1) 26.1060.00 (2) 26.1061.00 (3) 26.1061.50 (4) 26.1060.50



P.A. S.p.A.
Via Milano, 13
42048 Rubiera, Reggio Emilia - Italy
Tel +39.0522.623611
Fax +39.0522.629600
info@pa-etl.it

www.pa-etl.it



COMPANY WITH QUALITY MANAGEMENT
SYSTEM CERTIFIED BY DNV
= ISO 9001 =