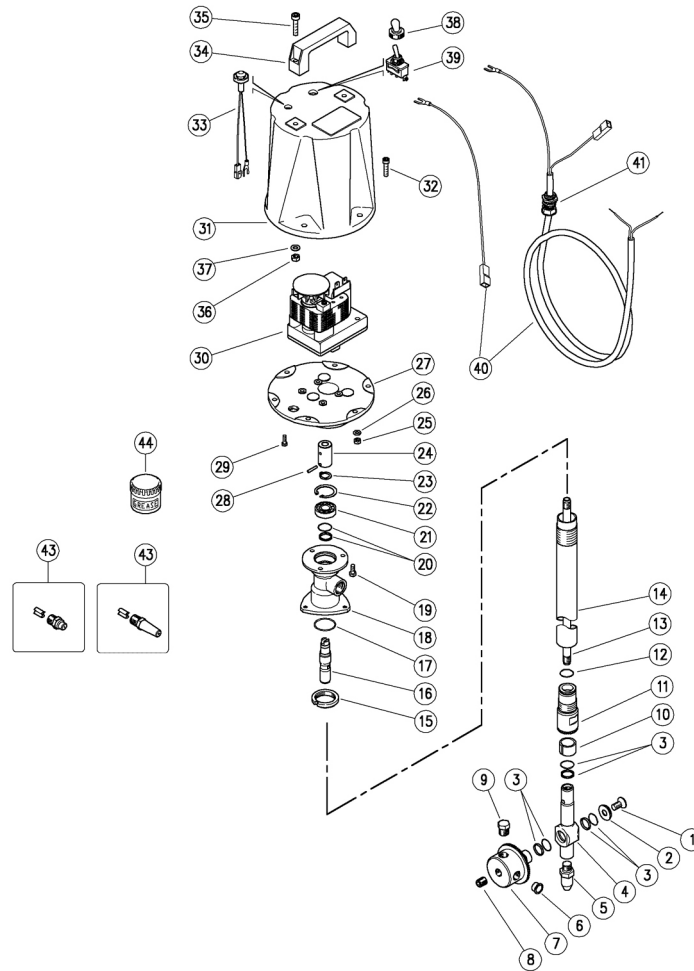


25.4770.00 M85E Tank cl.,el.-driv.24V AC



		K1K2K3K4						K1K2K3K4					
1	16.1954.12R Screw, DIN7991 M8x12 mm Sst.	1				10	24	80.0031.51R Joint, 8-11 x33mm Sst.	1				1
2	80.0094.51R C/sunk washer, 8,5x28x4,5mm Sst.	1				3	25	11.4524.51R Hex. nut, M5, Sst.	6				10
3	10.2030.18R Stem seal, 18x23x2 mm +O-ring Epdm	3	•			5	26	14.3560.00R Washer, 5,3x10x1 mm Sst.	6				10
4	80.0093.51R Buffer, M12 Sst.	1				1	27	80.0032.42R Flange for electr.gearmotor, Al	1				1
5	80.0004.51R Buffer tip, M12 Sst.	1				3	28	15.1030.00R Roll pin, 3x16 mm Sst.	2				10
6	15.3720.14R Plug, 1/4" Bsp plast.	2				4	29	16.1834.15R Screw, DIN933 M4x12 mm Sst.	4				10
7	80.0091.51R Nzl hold. pinion, z.57 4?1/4 Npt F Sst.	1				2	30	13.0825.00R Gearmotor, 24V AC	1				1
8	16.2242.12R Set screw, DIN913 M12x12 mm Sst.	1				10	31	80.0026.84R Motor casing, PA black	1				1
9	15.3721.14R Grub screw, Sst. 1/4M Npt	2				10	32	16.1873.00R Screw, DIN912 M5x20 mm Sst.	6				10
10	80.0024.85R Bushing, opn. 18x22x14,8mm PTFE	1	•			5	33	15.0800.00R Pilot lamp + nut + ring nut 24V	1				3
11	80.0092.51R Pinion, z.34 Sst.	1				1	34	12.8311.00R Handle	1				5
12	10.3184.10R O-ring, 2,62x18,72 mm Vi 70	1	•			10	35	16.1896.20R Screw, DIN912 M6x20 mm Sst.	2				10
13	80.0003.56R Tube, M10x1 MM 894mm Sst.	1				1	36	11.4540.00R Hex. nut, M6, Sst.	2				10
14	80.0052.56R Tube, M28x1 M 895mm Sst.	1				1	37	14.3570.00R Washer, 6,2x14x1,5 mm Sst.	2				10
15	80.0012.51R Ring nut, M28x1 Sst.	1				2	39	12.5016.20R On/off unipol. switch+protec.	1				3
16	80.0002.51R Propeller shaft, Sst.	1				1	40	12.5016.00R Cable, 2x1,5 L.2500 mm	1				1
17	10.3205.10R O-ring, 2,62x26,64 mm Vi 70	1	•			10	41	13.6000.00R Cable gland	1				5
18	80.0051.52R Manifold, 3/8F Bsp Sst.	1				1	43	16.1380.45R Nzl, sst,1/4M Npt+guid.vane 00.045 **	2-4				10
19	16.1870.02R Screw, DIN933 M5x12 mm Sst.	3				10	43	80.0418.23R Xnd. nzl., sst. 07 1/4M Npt+guid.vane ***	2-4				2
20	10.2030.00R Stem seal, 15x20x2,2 mm +O-ring	1	•			4	43	80.0420.23R Xnd. nzl., sst. 09 1/4M Npt+guid.vane ***	2-4				2
21	11.4412.28R Ball-bearing, 12x28x8 mm - 2RS1 Sst.	1	•			3	43	80.0430.23R Xnd. nzl., sst. 20 1/4M Npt +guid.vane ***	2-4				2
22	10.1011.05R Snap ring, l 28 Sst.	1	•			10	44	14.6552.00R Teflon silicon grease ?30g.>All ***	1				2
23	10.0999.05R Snap ring, E 12 Sst.	1	•			10							

\*\*  
\*\*\*

		K1K2K3K4			
K1	25.4721.24 Seals Spares Kit - M85E/P 4x1pcs.				1
K2	25.4724.24 Ball-bear. Spares Kit - M85E/P 4x1pcs.				1