


**P.A. – S.p.A. – EQUIPAGGIAMENTI TECNICI DEL LAVAGGIO**

VIA MILANO, 13 – CASELLA POSTALE 115 – 42048 RUBIERA (REGGIO EMILIA) – ITALY  
 Tel. +39 0522 623611 – Fax. +39 0522 629600 – R.E.A. RE 156319 – R.I. RE11535 – Mecc. RE 013446  
 C.F. e P. IVA 01035950359 – Cap. Soc. i.v. € 750.000,00 – Codice Identificativo C.E.E. IT 01035950359  
 ART. 2497 – BIS C.C. DIREZIONE E COORDINAMENTO BENETTI srl R.I. TRIB. DI RE 01480690351  
 Web: <http://www.pa-etl.it> – E-mail: [info@pa-etl.it](mailto:info@pa-etl.it)



## VS450-200/300 -Safety Valve

Technical Handbook: E 256

DN 32



- **60.4120.00** VS450 -200 1"1/4 Bsp F
- **60.4130.00** VS450 -300 1"1/4 Bsp F
- **60.4120.50** VS450 -200 1"1/4 Npt F
- **60.4130.50** VS450 -300 1"1/4 Npt F

- Intended for use with high flow rates
- Special steel spring with superior mechanical features, to maintain calibration settings for longer
- Screw/Locknut adjustment to set maximum pressure level
- Dynamic seals with O-ring and sliding gasket
- Fixing screw slots

### TECNICAL DATA

Max. Flow Rate 450 l/min - Max. Temperature 90°C (1)

P/N	RATED PRESSURE	PERMISSIBLE PRESSURE	MIN. ADJUSTABLE PRESSURE	(2) PRESSURE INCREASE	INLET	BYPASS	WEIGHT
	bar - MPa	bar - MPa	bar - MPa	bar - MPa			g
<b>60.4120.00</b>	200 - 20	220 - 22	50 - 5	38 – 3.8	1"1/4 Bsp F	1"1/4 Bsp F	3800
<b>60.4130.00</b>	300 - 30	330 - 33	60 - 6	38 – 3.8	1"1/4 Bsp F	1"1/4 Bsp F	3800
<b>60.4120.50</b>	200 - 20	220 - 22	50 - 5	38 – 3.8	1"1/4 Npt F	1"1/4 Npt F	3800
<b>60.4130.50</b>	300 - 30	330 - 33	60 - 6	38 – 3.8	1"1/4 Npt F	1"1/4 Npt F	3800

(1) The valve is especially designed for a constant use at a water temperature of 60°C. It can withstand up to a max. temperature of 90°C for short intervals only.

(2) The max. pressure increase inside the valve occurs when the max. flow rate is discharged at max. calibration pressure.

<b>Instruction, Maintenance, Installation, Spare Parts Booklet.</b> For a correct use of the item, please follow the instructions. <b>Please copy all relevant information on the use and maintenance booklet of the machine.</b>	n. 12.9256.00



**PROBLEM HANDLING: CAUSES AND SOLUTIONS**

<b>PROBLEMS</b>	<b>PROBABLE CAUSES</b>	<b>SOLUTIONS</b>
Valve pulses	<ul style="list-style-type: none"> <li>- Presence of air in the system</li> <li>- Seals worn out</li> <li>- Circuit blocked</li> </ul>	<ul style="list-style-type: none"> <li>- Bleed</li> <li>- Replace</li> <li>- Clean or widen up passages</li> </ul>
Valve does not reach desired pressure level	<ul style="list-style-type: none"> <li>- Wrong nozzle size</li> <li>- Ball seat and/or shutter worn out</li> <li>- Nozzle worn out</li> <li>- Presence of material matter</li> </ul>	<ul style="list-style-type: none"> <li>- Change</li> <li>- Replace</li> <li>- Replace</li> <li>- Clean</li> </ul>
Pressure drops	<ul style="list-style-type: none"> <li>- Nozzle worn out</li> <li>- Pump seals worn out</li> <li>- Valve seat worn out</li> <li>- Presence of air in the system</li> </ul>	<ul style="list-style-type: none"> <li>- Replace</li> <li>- Replace</li> <li>- Replace</li> <li>- Bleed</li> </ul>
Pressure spikes	<ul style="list-style-type: none"> <li>- Nozzle clogged</li> </ul>	<ul style="list-style-type: none"> <li>- Clean</li> <li>- Repeat calibration procedure and replace nozzle</li> </ul>
Water leaking out of discharge port Valve chatters	<ul style="list-style-type: none"> <li>- Seat O-ring worn out</li> <li>- Seat worn out</li> <li>- Presence of material matter</li> <li>- Pump valves worn out</li> </ul>	<ul style="list-style-type: none"> <li>- Replace</li> <li>- Replace</li> <li>- Clean</li> <li>- Replace</li> </ul>

**MAINTENANCE**

In normal working conditions the safety valve should not open (no water discharge); if the valve is fitted on the pump head, it is in any case submitted to pressure cycles which have to be calculated for maintenance.

**STANDARD:** every 400 working hours (approximately 10000 working cycles of the system), check and lubricate the seals with water resistant grease.

**SPECIAL:** every 800 working hours (approximately 20000 working cycles of the system), control the wear of the seals and internal parts and, if necessary, replace with original PA parts taking care, during installation, to lubricate with water resistant grease. Furthermore verify the absence of scale or dirt on the seat and the shutter.

**ATTENTION:** reassemble the valve in the correct manner paying special attention how to set the valve as described in the paragraph **PRESSURE ADJUSTMENT/SETTING**.

Maintenance has to be carried out by Specialized Technicians.

**The manufacturer is not to be considered responsible for damage as a result from incorrect fitting and maintenance**

Technical data, descriptions and illustrations are indicative and liable to modification without notice.

**REGULATIONS : See Standard Manual.**

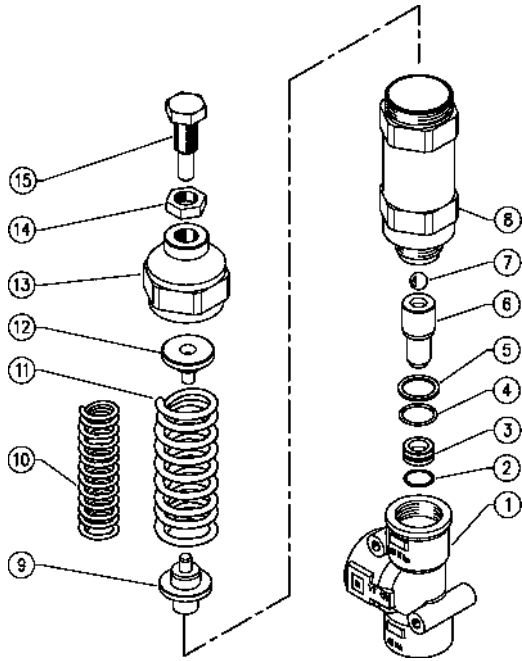
The equipment hereby described bears the CE marking in accordance with the Rules and Directives referred to in the **Declaration of Conformity**.

For a correct use, follow the instructions given in this booklet and re-print them on the Use and Maintenance Booklet of the machine.

Make sure that you are given **the original Declaration of Conformity** for the chosen item. This booklet is **applicable for all valves type VS 450-200/300**

**60.4120.00 VS450/200 safety valve 1"1/4F Bsp F**

**60.4120.50 VS450/200 unload. 1"1/4 Npt F**



**60.4130.00 VS450/300 unload. 1"1/4F Bsp F**

**60.4130.50 VS450/300 unload. 1"1/4 Npt F**

Pos.	P/N	Description	Q.ty	K1	K2	K3	K4	
1	60.4101.35	Housing -VS450, 1"1/4 Bsp brass (1)	1					1
1	60.4111.35	Housing -VS450, 1"1/4 Npt F brass (2)	1					1
2	10.3072.01	O-ring, 1,78x20,35 mm Ni 85	1	•				10
3	60.4109.51	Seat, 15x23,5x10 mm Sst.	1	•				3
4	10.3244.00	O-ring, 3,53x24,99 mm	1	•				10
5	10.4097.00	Back-up ring, 25x31,2x2mm	1	•				5
6	60.4108.51	Piston -VS450, Sst.	1	•				3
7	14.7465.00	Ball, 1/2" Sst.	1					5
8	60.4106.31	Piston holder, M 36	1					1
9	60.4103.31	Ball holder	1					3
10	60.4110.61	Spring, 5,5x15,5x94mm (1)	1					3
11	60.4102.61	Spring, 10,5x33,5x119mm	1					3
12	60.4105.31	Spring guide	1					3
13	60.4104.31	Plug, M 52 brass	1					3
14	11.4850.08	Nut, M 18 Sst.	1					3
15	60.4107.51	Screw, M18 Sst.	1					5

Kit	P/N	Description	Q.ty
K1	60.4122.24	Spares kit -VS 450/200-300, 5x1pcs.	1

(1) 60.4130.00 (2) 60.4130.50