

| | | | | |
|---|--|--|---|--|
|  | EQUIPAGGIAMENTI TECNICI LAVAGGIO | TESTINA AUTOMOVENTE A42-R SELF ROTATING CLEANING HEAD 25.5180.XX | ① | <div style="border: 2px solid black; padding: 2px;">4</div> 17 |
| | | | Ⓜ | |

SPECIFICHE TECNICHE SPECIFICATIONS

| | |
|---|--------------------------------------|
| - PRESSIONE NOMINALE <i>RATED PRESSURE</i> | 40÷140 bar - 4÷14 MPa (580÷2000 psi) |
| - PRESSIONE CONSENTITA <i>PERMISSIBLE PRESSURE</i> | 160 bar - 16 MPa (2300 psi) |
| - PORTATA <i>FLOW RATE</i> | 15÷50 l/min (4÷13.2 USGp.m.) |
| - TEMPERATURA MASSIMA ACQUA <i>MAX WORKING TEMPERATURE</i> | 0-90°C (32-195°F) |
| - PESO <i>WEIGHT</i> | 3.59 Kg (126.6 oz) |
| - FREQUENZA ROTAZIONE ASSE PRINCIPALE <i>MAIN AXIS ROTATING SPEED</i> | 29÷36 giri/min (RPM) |
| - TEMPO CICLO BREVE <i>SHORT CYCLE TIME</i> | 48,5÷39 secondi |
| - TEMPO CICLO COMPLETO <i>FULL CYCLE TIME</i> | 97÷78 secondi |
| - ATTACCO ALIMENTAZIONE ACQUA <i>INLET CONNECTION SIZE</i> | 1/2 Gas |
| - ATTACCO UGELLI N°3 (UGELLI NON FORNITI) <i>N°3 NOZZLE CONNECTIONS (NOZZLES NOT SUPPLIED)</i> | 1/8 NPT |

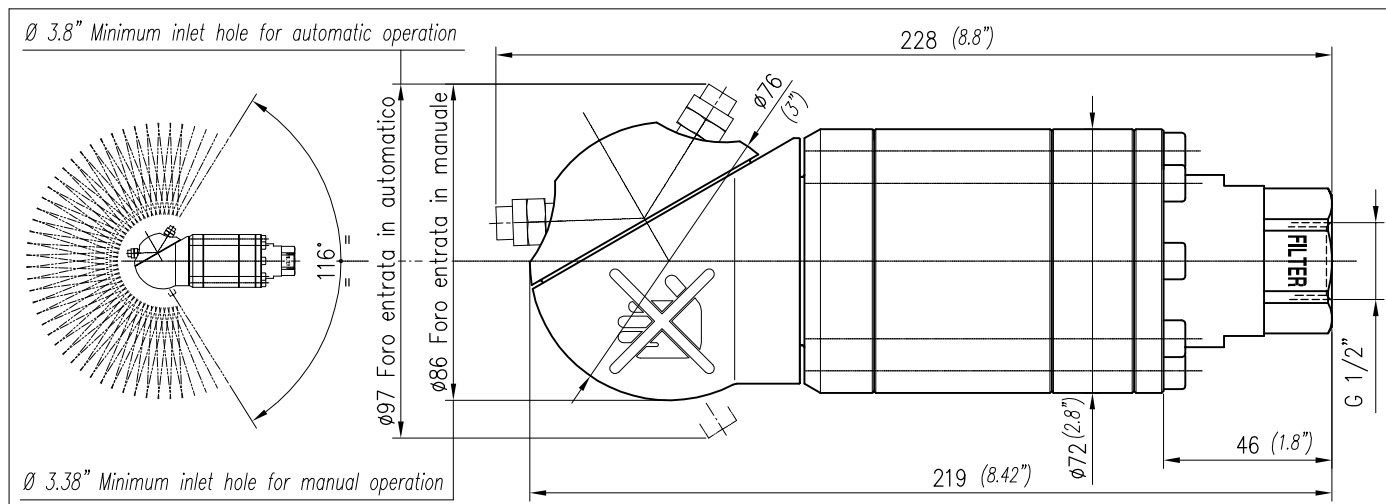
TESTINA AUTOMOVENTE

- Portata ridotta, alta pressione, elevata forza d'impatto.
- Velocità di rotazione indipendente dalla temperatura dell'acqua.
- Costruzione in acciaio inox e alluminio anticorrosivo anodizzato.
- Guarnizioni in viton e PTFE.
- Idonea per l'impiego nel settore alimentare.

SELF ROTATING CLEANING HEAD

- Reduced flow, high pressure, strong cleaning impact.
- Rotating speed independent from water temperature.
- Structure in SST and anodised anticorrosive aluminium.
- Seals in viton and PTFE.
- Designed for the food industry.

MISURE D'INGOMBRO OVERALL DIMENSIONS



CARATTERISTICHE TECNICHE TECHNICAL SPECIFICATIONS

A42-R

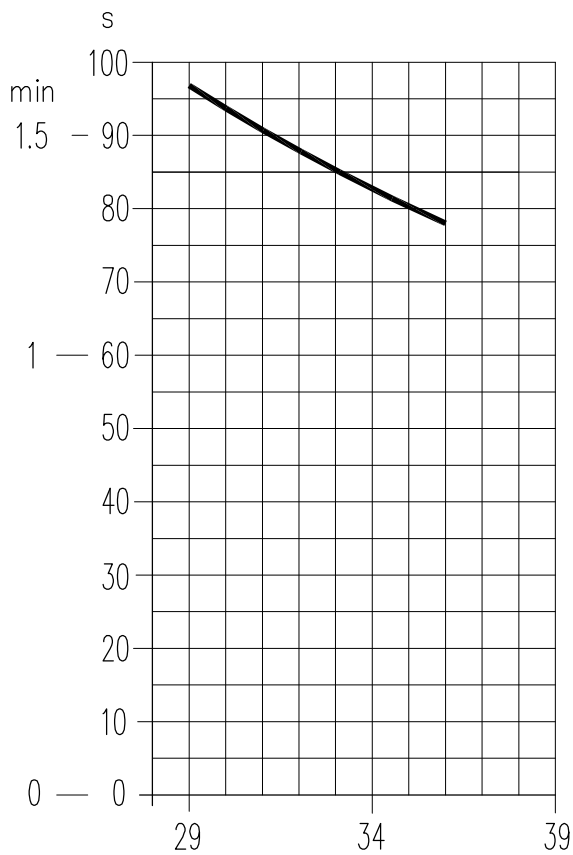


21/12/09

| | |
|--|--------------------------------------|
| - PRESSIONE NOMINALE <i>RATED PRESSURE</i> | 40÷140 bar - 4÷14 MPa (580÷2000 psi) |
| - PRESSIONE CONSENTITA <i>PERMISSIBLE PRESSURE</i> | 160 bar - 16 MPa (2300 psi) |
| - PORTATA <i>FLOW RATE</i> | 15÷50 l/min (4÷13.2 USGp.m.) |
| - TEMPERATURA MASSIMA ACQUA <i>MAX WORKING TEMPERATURE</i> | 0-90°C (32-195°F) |
| - PESO <i>WEIGHT</i> | 3.59 Kg (126.6 oz) |
| - FREQUENZA ROTAZIONE ASSE PRINCIPALE <i>MAIN AXIS ROTATING SPEED</i> | 29÷36 giri/min (RPM) |
| - ATTACCO ALIMENTAZIONE ACQUA <i>INLET CONNECTION SIZE</i> | 1/2 Gas |
| - ATTACCO UGELLI N°3 <i>NOZZLES CONNECTION N°3</i> | 1/8 NPT |

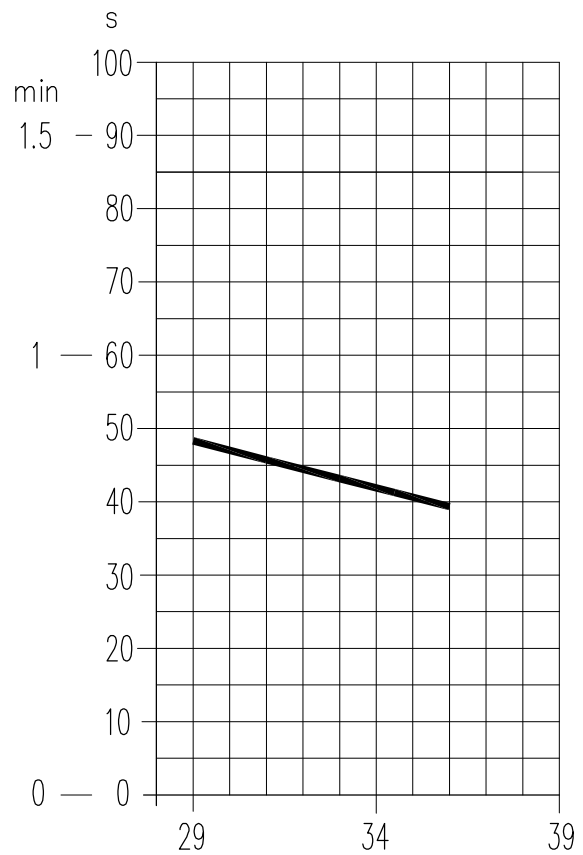
TEMPO PER UN CICLO COMPLETO DI LAVAGGIO
(47 GIRI DELL'ASSE PRINCIPALE)

TIME FOR A COMPLETE CLEANING CYCLE
(47 MAIN AXIS REVOLUTIONS)



TEMPO PER UN CICLO BREVE DI LAVAGGIO
(23,5 GIRI DELL'ASSE PRINCIPALE)

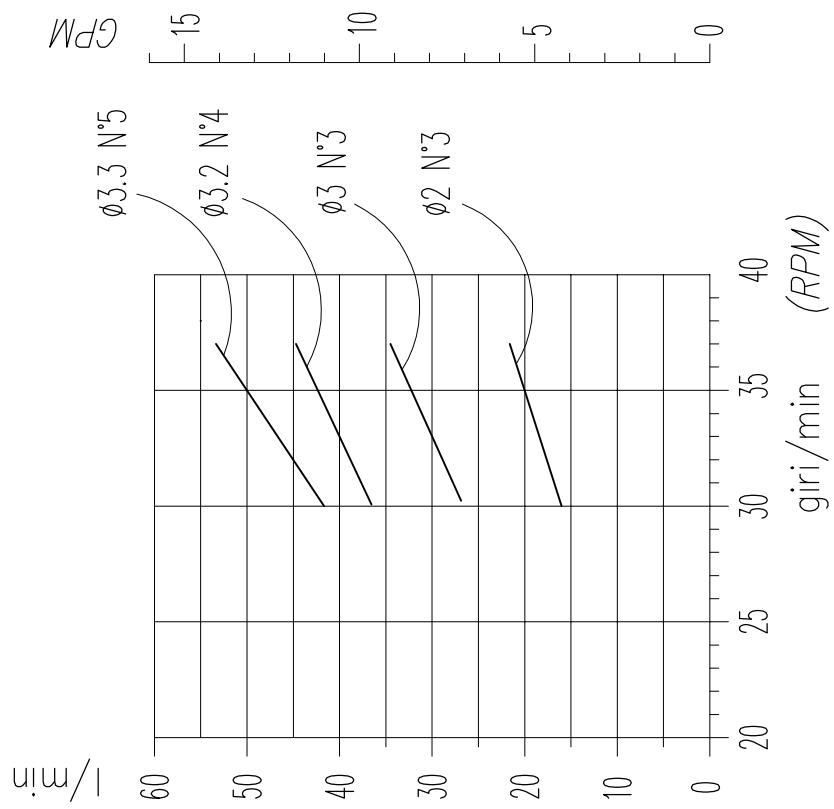
TIME FOR A SHORT CLEANING CYCLE
(23,5 MAIN AXIS REVOLUTIONS)



VELOCITA' DI ROTAZIONE giri/min
ROTATING SPEED RPM

-D1-

VARIAZIONE DEI GIRI IN FUNZIONE DELLA PORTATA
 RPM VARIATION IN RELATION TO FLOW



CADUTA DI PRESSIONE IN FUNZIONE DELLA PORTATA
 LOSS OF PRESSURE IN RELATION TO FLOW

~10 bar - 1 MPa



P.A. – S.p.A. – EQUIPAGGIAMENTI TECNICI DEL LAVAGGIO

VIA MILANO, 13 – CASELLA POSTALE 115 – 42048 RUBIERA (REGGIO EMILIA) – ITALY
 Tel. +39 0522 623611 – Fax. +39 0522 629600 – R.E.A. RE 156319 – R.I. RE11535 – Mecc. RE 013446
 C.F. e P. IVA 01035950359 – Cap. Soc. i.v. € 750.000,00 – Codice Identificativo C.E.E. IT 01035950359
 ART. 2497 – BIS C.C. DIREZIONE E COORDINAMENTO BENETTI srl R.I. TRIB. DI RE 01480690351
 Web: <http://www.pa-etl.it> – E-mail: info@pa-etl.it



Dichiarazione di conformità
Declaration of conformity

| | | | |
|---|-------|--|-----------------|
| Attrezzatura – Equipment: | | ACCESSORIO A PRESSIONE PRESSURE EQUIPMENT | |
| Modello – Type: | | A42R / A42R2 | |
| Fluido – Fluid: | | ACQUA CALDA E DETERGENTI HOT WATER AND DETERGENTS | |
| Gruppo fluidi: Group of Fluid: | ----- | Temperatura min. e max. ammissibile Permissible Temperature (min/max) | 0 ÷ 90°C |

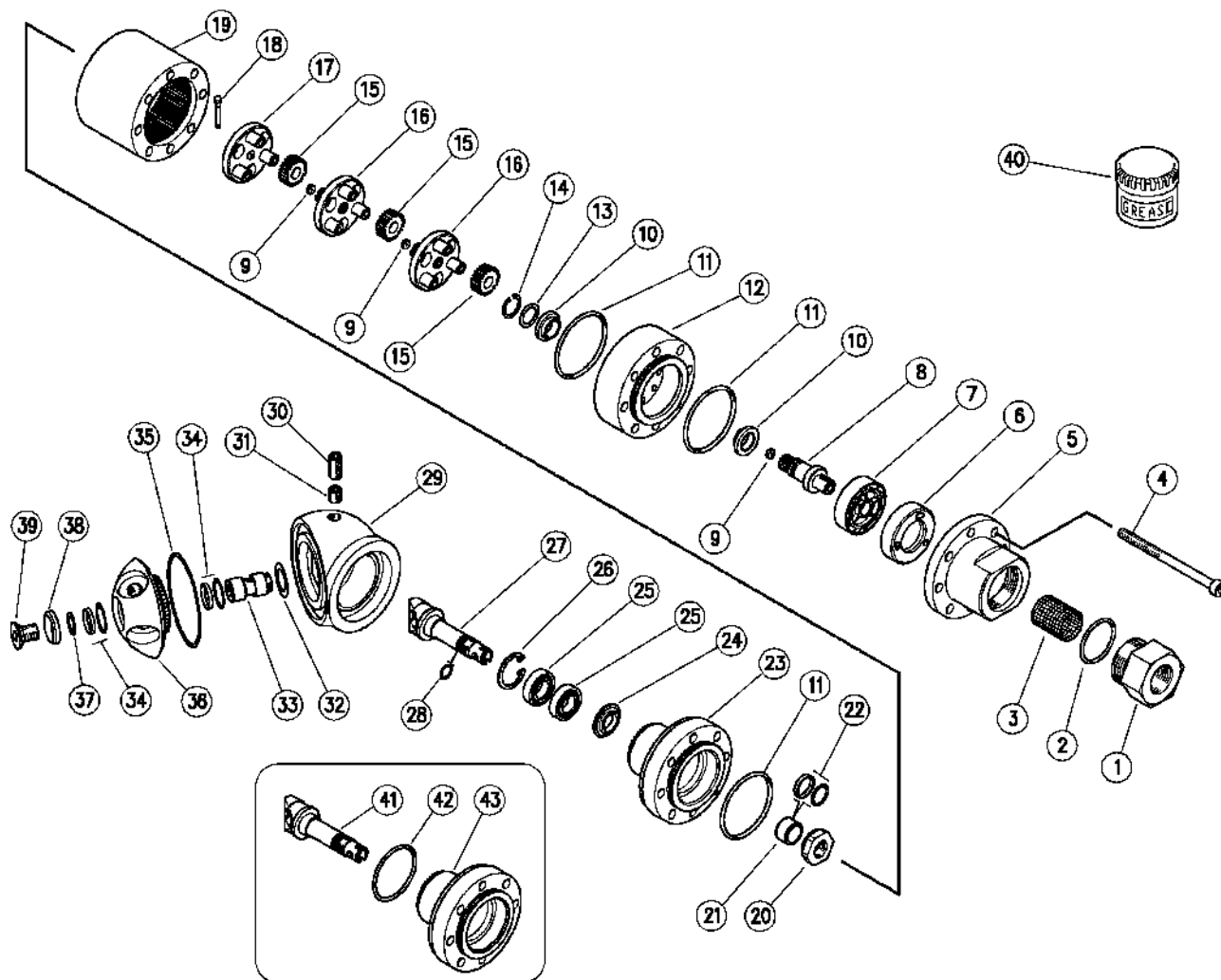
Procedura di valutazione della conformità
Conformità Assessment Procedure Followed

| | | | |
|--|-------|---|-------|
| Categoria: Category: | ----- | Modulo: Module: | ----- |
| Organismo notificato - Notified Body: | | ----- | |
| Attestato CE del tipo - EC Type - Examination Certificate: | | ----- | |
| Marcatura CE del fabbricante - Manufacturer's CE Marking: | | ----- | |
| Organismo Notificato per il Sistema Qualità: Notified Body for Assessment of Quality System: | | ----- | |
| Organismo di certificazione per il Sistema di Qualità: Notified Body for Certification of Quality System: | | DNV | |
| Norme europee applicate: Harmonized Standards applied : | | UNI 9335, CEI EN 60335-2-79, UNI EN 1829 | |
| Altre Direttive applicate: Other Directive applied: | | | |
| Codici di calcolo: Design Calculations Made: | | | |

| | | |
|--|--|--|
| Libretto uso e manutenzione presente nel sito web Operation and Maintenance Manual to be found on Website | Il Fabbricante PA SpA The Manufacturer PA SpA | |
|--|--|--|

25.5180.20 A42 R Test.semov., 20 l/min
 25.5180.30 A42 R Test.semov., 30 l/min

25.5180.40 A42 R Test.semov., 40 l/min
 25.5180.50 A42 R Test.semov., 50 l/min



FINO ALLA MATRICOLA 98 COMPRESA

| Pos. | Codice | Descrizione | Q.tà | K1 | K2 | K3 | K4 | Pos. | Codice | Descrizione | Q.tà | K1 | K2 | K3 | K4 |
|------|------------|--|------|----|----|----|----|------|------------|------------------------------------|------|----|----|----|----|
| 1 | 80.0534.51 | Racc. entrata G1/2F inox | 1 | | | | 3 | 21 | 80.0509.51 | Boccola porta guarnizioni inox | 1 | | | | 3 |
| 2 | 10.3077.10 | An.OR 1,78x28,3 mm Vi 70 | 1 | • | | | 10 | 22 | 10.2035.16 | Guarn.16x21x2,1 mm +OR Vit. | 1 | • | | | 5 |
| 3 | 28.0116.53 | Filtro d.21,5mm 38mesh-700µ in. | 1 | | | | 5 | 23 | 80.0552.51 | Ingranag.fisso z:45 inox. | 1 | | | | 1 |
| 4 | 16.1909.00 | Vite DIN912 M6x90 mm inox | 8 | | | | 10 | 24 | 80.0550.31 | Distanziale, 12,3x27,5mm ottone | 1 | | | | 5 |
| 5 | 80.0533.51 | Corpo entrata inox | 1 | | | | 1 | 25 | 11.4412.28 | Cuscinetto 12x28x8 mm - 2RS1 inox | 2 | | • | | 3 |
| 6 | 80.0516.51 | An. Iniettore 3x3 mm inox | 1 | | | | 1 | 26 | 10.1011.05 | An. elast. I 28 inox | 1 | | • | | 10 |
| 6 | 80.0514.51 | An. Iniettore 3x2 mm inox (1) | 1 | | | | 1 | 27 | 80.0551.51 | Albero di trasmissione inox. | 1 | | | | 1 |
| 6 | 80.0526.51 | An. Iniettore 4x3,2 mm inox (2) | 1 | | | | 1 | 28 | 10.3019.10 | An.OR 1,5x9,5 mm Vi 70 | 1 | • | | | 10 |
| 6 | 80.0525.51 | An. Iniettore 5x3,3 mm inox (3) | 1 | | | | 1 | 29 | 80.0523.41 | Calotta sferica A42R/R2 Al. | 1 | | | | 1 |
| 7 | 80.0512.84 | Turbina plast. | 1 | | | | 3 | 30 | 16.2225.00 | Grano DIN913 M8x16 mm inox | 1 | | | | 10 |
| 8 | 80.0540.22 | Albero planetario completo | 1 | | | | 1 | 31 | 16.2221.00 | Grano DIN914 M8x8 mm inox | 1 | | | | 10 |
| 9 | 80.0536.38 | An. Rasamento 1,2x6x2mm bronzo ** | 3 | | • | | 3 | 32 | 80.0513.53 | An. rasamento 15,4x23x0,3mm inox | 1 | | | | 5 |
| 10 | 80.0548.84 | Boccola | 2 | | • | | 3 | 33 | 80.0507.51 | Perno M12x1M-M8 F inox | 1 | | | | 3 |
| 11 | 10.3034.10 | An.OR 1,5x46 mm Vi 70 | 3 | • | | | 10 | 34 | 10.2035.00 | Guarn. stelo 15x20x2 mm +OR | 2 | • | | | 4 |
| 12 | 80.0532.51 | Flangia entrata acc.inox | 1 | | | | 1 | 35 | 10.3270.10 | An.OR 3,53x59,92 mm Vi 70 | 1 | • | | | 10 |
| 13 | 80.0510.53 | An. rasamento 12,3x17x0,5mm inox | 1 | | | | 5 | 36 | 80.0539.22 | Portaug.3x1/8Npt Al+ingr.z.47 | 1 | | | | 1 |
| 14 | 10.0999.05 | An. elast. E 12 inox | 1 | | • | | 10 | 37 | 80.0505.53 | An. rasamento 8,3x14x0,3mm inox | 1 | | | | 5 |
| 15 | 80.0501.38 | Satellite z.24 bronzo | 9 | | • | | 3 | 38 | 80.0015.51 | Rosetta svas. 8,5x22x4,5mm inox | 1 | | | | 3 |
| 16 | 80.0541.22 | Portasatelliti+3 perni+ingran. Z.12 inox | 2 | | | | 1 | 39 | 16.1954.12 | Vite DIN7991 M8x12 mm inox | 1 | | | | 10 |
| 17 | 80.0538.22 | Portasatelliti+3 perni inox+ spina | 1 | | | | 1 | 40 | 14.6550.00 | Grasso al teflon x30 g.>no Epdm ** | 1 | | | | 2 |
| 18 | 80.0545.31 | Spina fusibile D.3mm ** | 1 | | • | | 5 | 41 | 80.0506.51 | Albero di trasmissione inox | 1 | | | | 1 |
| 19 | 80.0542.51 | Corona z.60 per testina 3 stadi inox | 1 | | | | 1 | 43 | 80.0520.51 | Pignone z.45 inox | 1 | | | | 1 |
| 20 | 80.0504.51 | Ghiera M12x1 inox | 1 | | | | 1 | | | | | | | | |

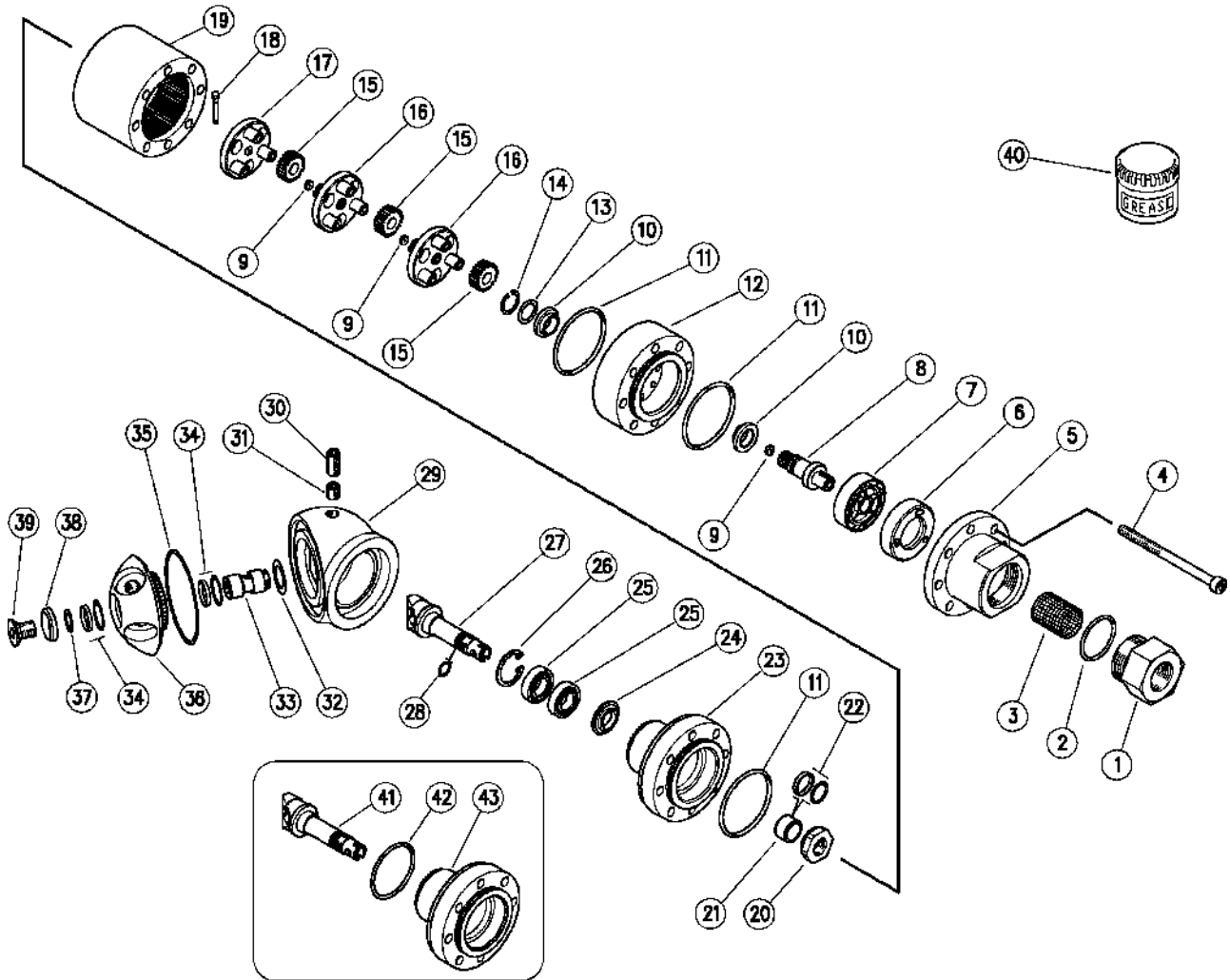
** Su richiesta

| Kit | Codice | Descrizione | Q.tà |
|-----|------------|------------------------------------|------|
| K1 | 25.5181.24 | Kit ric.guarn. A42R 6x1pz. | 1 |
| K2 | 25.5182.24 | Kit ric. A42/43/44 7x1pz. | 1 |
| K3 | 25.5183.24 | A42/43/44 - kit ric.bocc+guarn.2x1 | 1 |

(1) 25.5180.20 (2) 25.5180.40 (3) 25.5180.50

25.5180.20 A42-R Tank clean.,s/prop., 20 l/min
 25.5180.30 A42-R Tank clean.,s/prop., 30 l/min

25.5180.40 A42-R Tank clean.,s/prop., 40 l/min
 25.5180.50 A42-R Tank clean.,s/prop., 50 l/min



FINO ALLA MATRICOLA 98 COMPRESA

| Pos. | P/N | Description | Q.ty | K1 | K2 | K3 | K4 | Pos. | P/N | Description | Q.ty | K1 | K2 | K3 | K4 |
|------|------------|--|------|----|----|----|----|------|------------|--------------------------------------|------|----|----|----|----|
| 1 | 80.0534.51 | Inlet coupl., 1/2Bsp F Sst. | 1 | | | | 3 | 21 | 80.0509.51 | Seal holding bushing, Sst. | 1 | | | | 3 |
| 2 | 10.3077.10 | O-ring, 1,78x28,3 mm Vi 70 | 1 | • | | | 10 | 22 | 10.2035.16 | Seal, 16x21x2,1 mm+Or.iVit. | 1 | • | | | 5 |
| 3 | 28.0116.53 | Strainer 21,5mm 38mesh-700µm sst. | 1 | | | | 5 | 23 | 80.0552.51 | Pinion z:45 sst. | 1 | | | | 1 |
| 4 | 16.1909.00 | Screw, DIN912 M6x90 mm Sst. | 8 | | | | 10 | 24 | 80.0550.31 | Spacer ring, 12,3x27,5 brass | 1 | | | | 5 |
| 5 | 80.0533.51 | Inlet housing, Sst. | 1 | | | | 1 | 25 | 11.4412.28 | Ball-bearing, 12x28x8 mm - 2RS1 Sst. | 2 | | • | | 3 |
| 6 | 80.0516.51 | Ring injector, 3x3 mm Sst. | 1 | | | | 1 | 26 | 10.1011.05 | Snap ring, I 28 Sst. | 1 | | • | | 10 |
| 6 | 80.0514.51 | Ring injector, 3x2 mm Sst. (1) | 1 | | | | 1 | 27 | 80.0551.51 | Propeller shaft, Sst. | 1 | | | | 1 |
| 6 | 80.0526.51 | Ring injector, 4x3,2 mm Sst. (2) | 1 | | | | 1 | 28 | 10.3019.10 | O-ring, 1,5x9,5 mm Vi 70 | 1 | • | | | 10 |
| 6 | 80.0525.51 | Ring injector, 5x3,3 mm Sst. (3) | 1 | | | | 1 | 29 | 80.0523.41 | Spherical cap -A42R/R2, Al. | 1 | | | | 1 |
| 7 | 80.0512.84 | Turbine, plast. | 1 | | | | 3 | 30 | 16.2225.00 | Set screw, DIN913 M8x16 mm Sst. | 1 | | | | 10 |
| 8 | 80.0540.22 | Planetary shaft, complete | 1 | | | | 1 | 31 | 16.2221.00 | Set screw, DIN914 M8x8 mm Sst. | 1 | | | | 10 |
| 9 | 80.0536.38 | Shim ring, 1,2x6x2mm brz ** | 3 | • | | | 3 | 32 | 80.0513.53 | Shim ring, 15,4x23x0,3mm Sst. | 1 | | | | 5 |
| 10 | 80.0548.84 | Bushing ring | 2 | | • | | 3 | 33 | 80.0507.51 | Pin, M12x1M-M8F Sst. | 1 | | | | 3 |
| 11 | 10.3034.10 | O-ring, 1,5x46 mm Vi 70 | 3 | • | | | 10 | 34 | 10.2035.00 | Stem seal, 15x20x2 mm +O-ring | 2 | • | | | 4 |
| 12 | 80.0532.51 | Sst. inlet flange | 1 | | | | 1 | 35 | 10.3270.10 | O-ring, 3,53x59,92 mm Vi 70 | 1 | • | | | 10 |
| 13 | 80.0510.53 | Shim ring, 12,3x17x0,5mm Sst. | 1 | | | | 5 | 36 | 80.0539.22 | Nzl hold,3x1/8Npt Al+gear z.47 | 1 | | | | 1 |
| 14 | 10.0999.05 | Snap ring, E 12 Sst. | 1 | | • | | 10 | 37 | 80.0505.53 | Shim ring, 8,3x14x0,3mm Sst. | 1 | | | | 5 |
| 15 | 80.0501.38 | Planetary gear, z.24 brz | 9 | | • | | 3 | 38 | 80.0015.51 | C/sunk washer, 8,5x22x4,5mm Sst. | 1 | | | | 3 |
| 16 | 80.0541.22 | Plan. gear holder+3 pins+gear, Sst. | 2 | | | | 1 | 39 | 16.1954.12 | Screw, DIN7991 M8x12 mm Sst. | 1 | | | | 10 |
| 17 | 80.0538.22 | Planetary gear holder+3 pins, Sst.+1 pin | 1 | | | | 1 | 40 | 14.6550.00 | Teflon grease x30g.>no Epdm ** | 1 | | | | 2 |
| 18 | 80.0545.31 | Fuse plug, D.3mm ** | 1 | | • | | 5 | 41 | 80.0506.51 | Propeller shaft, Sst. | 1 | | | | 1 |
| 19 | 80.0542.51 | Ring gear z.60, 3-stage cleaner, sst. | 1 | | | | 1 | 43 | 80.0520.51 | Pinion, z.45 Sst. | 1 | | | | 1 |
| 20 | 80.0504.51 | Ring nut, M12x1 Sst. | 1 | | | | 1 | | | | | | | | |

** On request

| Kit | P/N | Description | Q.ty |
|-----|------------|---------------------------------|------|
| K1 | 25.5181.24 | Seals Spares Kit - A42R 6x1pcs. | 1 |
| K2 | 25.5182.24 | Spares Kit - A42/43/44 7x1pcs. | 1 |
| K3 | 25.5183.24 | Spares Kit - A42/43/44 2x1pcs. | 1 |

(1) 25.5180.20 (2) 25.5180.40 (3) 25.5180.50



P.A. S.p.A.
Via Milano, 13
42048 Rubiera, Reggio Emilia - Italy
Tel +39.0522.623611
Fax +39.0522.629600
info@pa-etl.it

www.pa-etl.it



COMPANY WITH QUALITY MANAGEMENT
SYSTEM CERTIFIED BY DNV
= ISO 9001 =